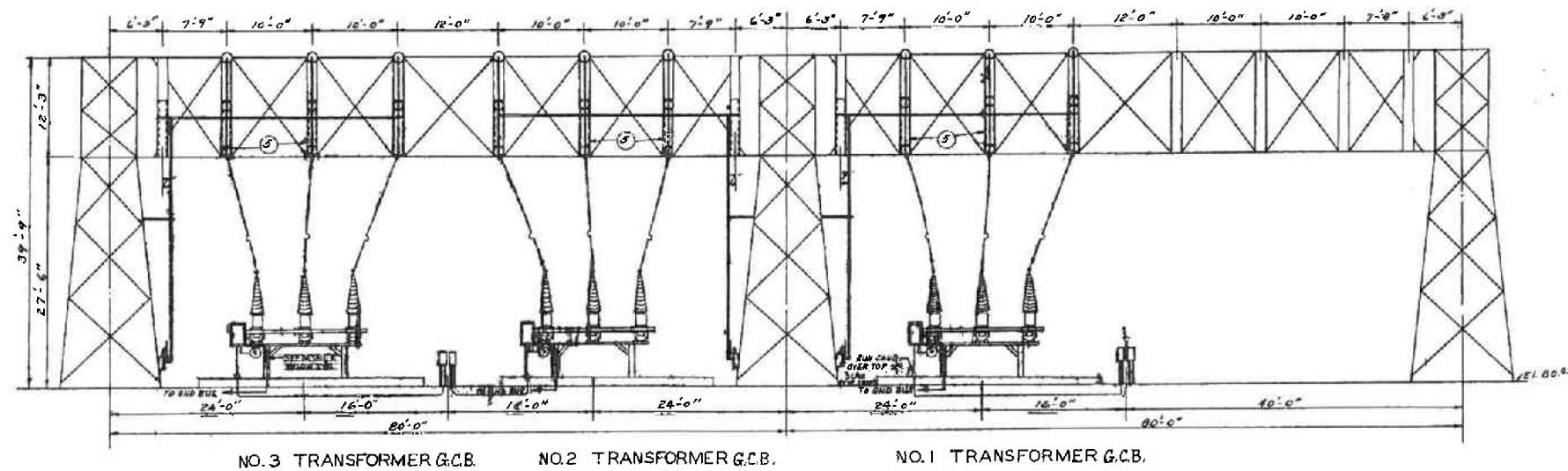


EXHIBIT 2-1

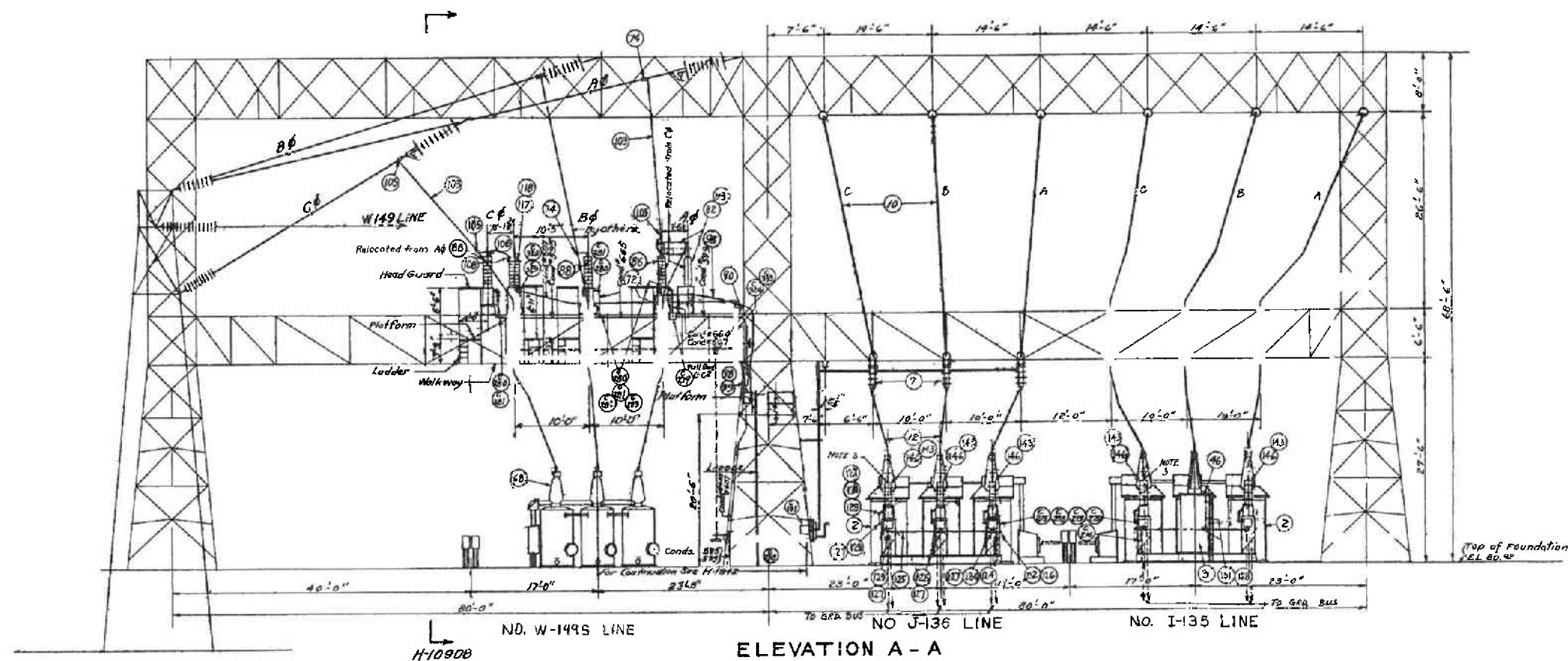
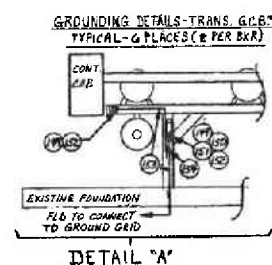
New England Power Company
Deadend Tower, Type N-48
J136N Transmission Line
Over and Across the
Connecticut River
Walpole, New Hampshire

Scale: As Shown Date: August 2010

115KV LINE LINE CROSSING OF CONNECTICUT RIVER IN WALPOLE, NH DEADEND TOWER SCALE : As Shown	nationalgrid		INCHES ON ORIGINAL	
	ORIGINAL NAME	DATE	REV	DATE
	DRAWN BY	KMK	8/17/10	
	CHECKED BY			
	DESIGNED BY			
	APPROVED BY			



ELEVATION B - B
See Dwg. H-1940



- NOTES**
1. FOR ITEMS WITH PREFIX C OR (C) REFER TO CONDUIT & CABLE MATERIAL LIST ML-1924-OTHER ITEMS ML-1940. FOR REFERENCE DRAWINGS SEE H-1940.
 2. Before mounting Capacitor, remove bottom plate from Capacitor and apply as cover to under side of 11 1/2" Dia hole in structural mounting plate.
 3. Field to replace existing line connector with 4"x4" copper bar.

AS NOTED
4/10/66
L.A.
TAC
288

EXHIBIT 3-1

